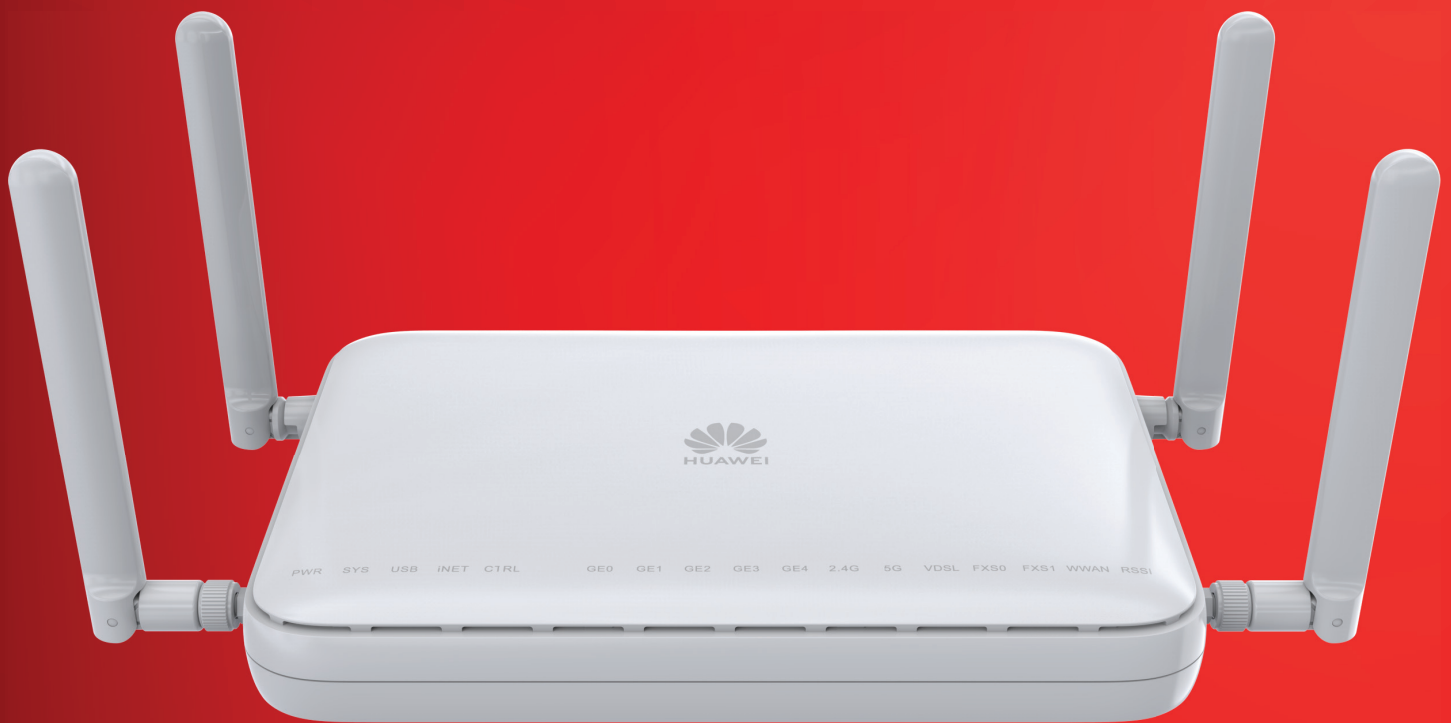




Business Connect Huawei AR 617

Business Grade Router

Huawei AR617VW-LTE4EA



from 10Mbps to 200Mbps.



Secure internet connectivity,
private network access.



Multiple concurrent
Wi-Fi connections.

What is it?

Vodacom Business offers the versatile Huawei AR617 by default with the Business Connect managed Internet service from 10Mbps to 200Mbps. The device provides secure internet connectivity, private network access, voice transmission and multiple concurrent Wi-Fi connections. Customers that require higher bandwidths will receive the Huawei AR651 with their Business Connect service.

How does a customer get the Device?

Vodacom Business Connect customers will be allocated a Huawei AR 617 router with a provisioned Vodacom SIM card for back-up in the unlikely event that the primary connection fails. The Vodacom provisioned SIM card will provide the customer with 100 Gigabytes of LTE (Capped) data per month. In the event of the primary link failing, the LTE link will serve as a back-up. Both the router and sim card are delivered to the customer on the shipping address provided by the customer.

Vodacom Business Internet Customers who require higher bandwidths and wireless requirements can opt for the AR617 instead of the Broadband router. This router is especially robust when applying multiple IP addresses as well as Wi-Fi deployments where multiple wireless sessions are used simultaneously. Upgrade your Business Internet Wireless and Fibre experience with the business grade AR617.

What you need to know about the Huawei AR 617 router

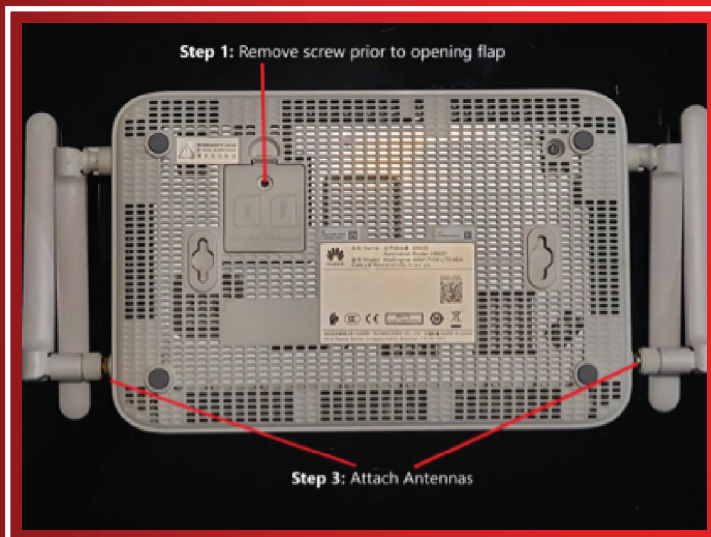
- Huawei AR617 is WI-FI enabled as it consists of WI-FI antennas.
- Huawei AR617 has voice ports (Two FXS interfaces) making it possible to provide a Voice VLAN service together with the Business Connect.
- High reliability - Link backup for enterprise services, improving reliability.
- Extensive network interfaces cards such as LAN, WAN, 3G/4G/LTE, and WLAN.
- SIM card needs to be inserted into the LTE module before the device boots up to enable LTE. Huawei AR 617 takes approximately 10 minutes to reboot.
- SIM cards should always be inserted in SIM slot 1.
- Cost-effective CPE device, meeting diversified enterprise service requirements, saving space, and reducing TCO.

Specifications	AR617
WAN Speed with services* (IMIX)	<200Mbps
No. of concurrent users	<100 concurrent WI-FI sessions
Fixed Ports	4 LAN Ports; WAN interfaces: GE combo interface
Voice Ports	2 FXS
LTE	3G/4G/LTE
WLAN	Dual-band (2.4 GHz and 5 GHz)
Dimensions (H x W x D)	38.0mm x 240.0mmx 161.5mm

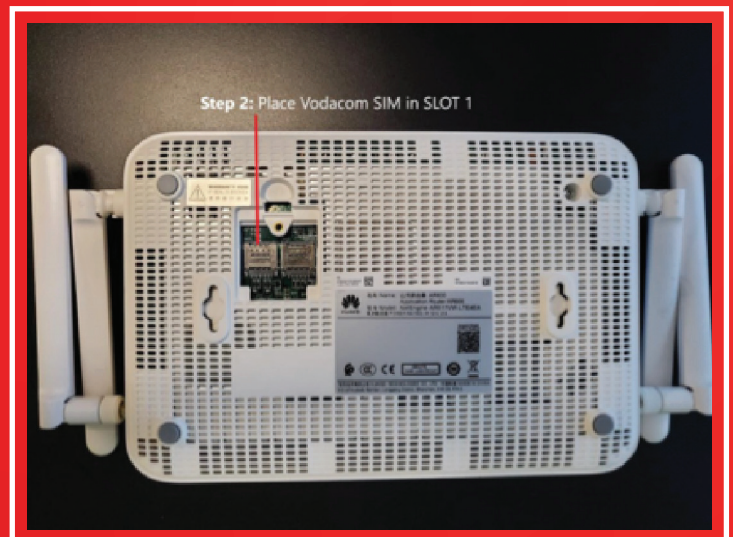
How does a customer set up the router?

1. At the back of the router, the customer must open the flap – **Figure A (Step 1)**
2. Place the Vodacom SIM card in the SIM slot 1 which can be found after the flap has been opened – **Figure B (Step 2)**
3. Attach the four provided antennas to the Huawei router by screwing them on clockwise if they are not already attached – **Figure A (Step 3)**
4. Plug the power cable into the device and thereafter insert the plug into the electrical socket to power up the device - **Figure C (Step 4)**
5. The default password for the Wi-Fi is the serial number which is located on the back of the device - **Figure D**

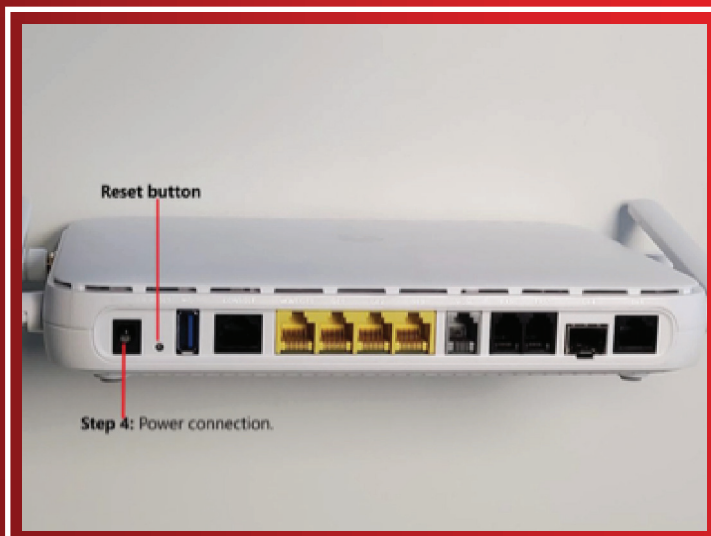
A



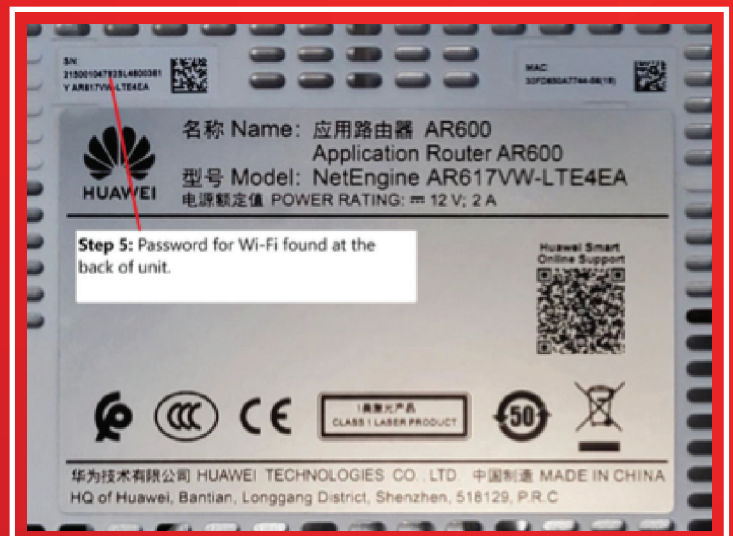
B



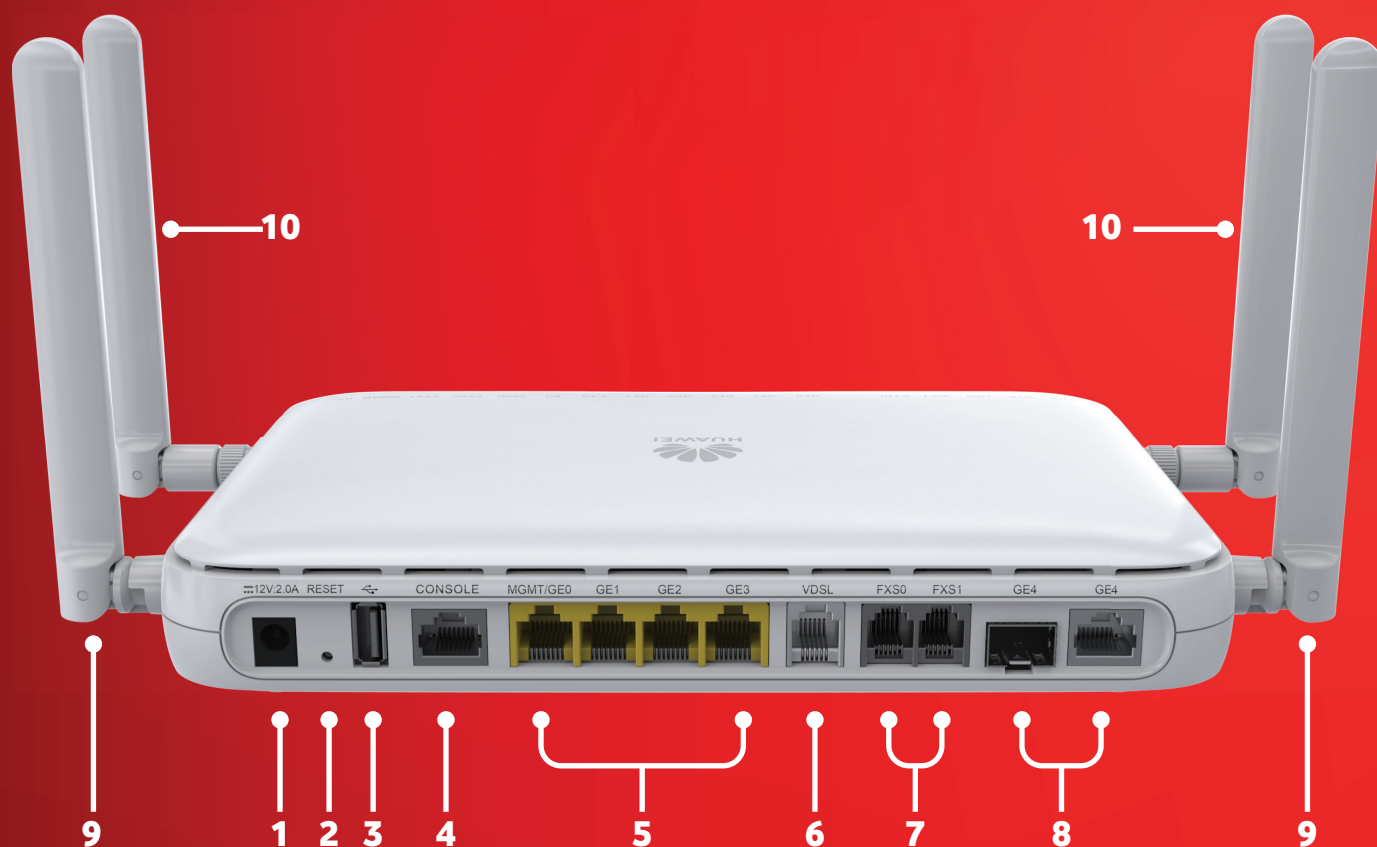
C



D



COMPONENTS OF THE HUAWEI AR617VW-LTE4EA



1. Power Jack

2. Reset Button

3. USB interface (Host)

4. Console interface

5. LAN interfaces: four GE electrical interface

6. WAN interface: VDSL interface

7. Two FXS interfaces

8. WAN interface: GE combo interface

**9. Two Wi-Fi antenna interfaces
(back of the router)**

10. Two LTE antennas (front of the router)



vodacom
business